

## DOWNLOADING LIBRIS DESIGN WITH NETSCAPE

*This procedure assumes that you are starting from within the LIBRIS Design website located at <http://librisdesign.org/index.html>*

1. Open your web browser and go to the link listed above.
2. Click on the "Download Libris Design" button.

A dark red rectangular button with the text "Download Libris Design" in white, bold, sans-serif font.

3. This will take you to the "Download Libris Design" screen.



4. Click on the "Download LIBRIS Design Database" button.

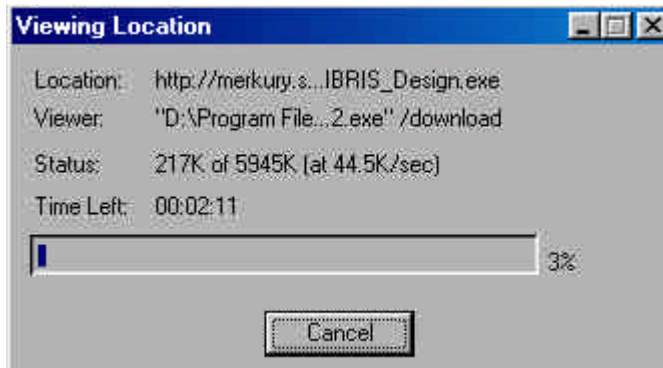
A dark red rectangular button with the text "Download Libris Design Database" in white, bold, sans-serif font.

5. In order to download the database, you must first agree to the disclaimer by clicking on the "I agree to the terms above" link:

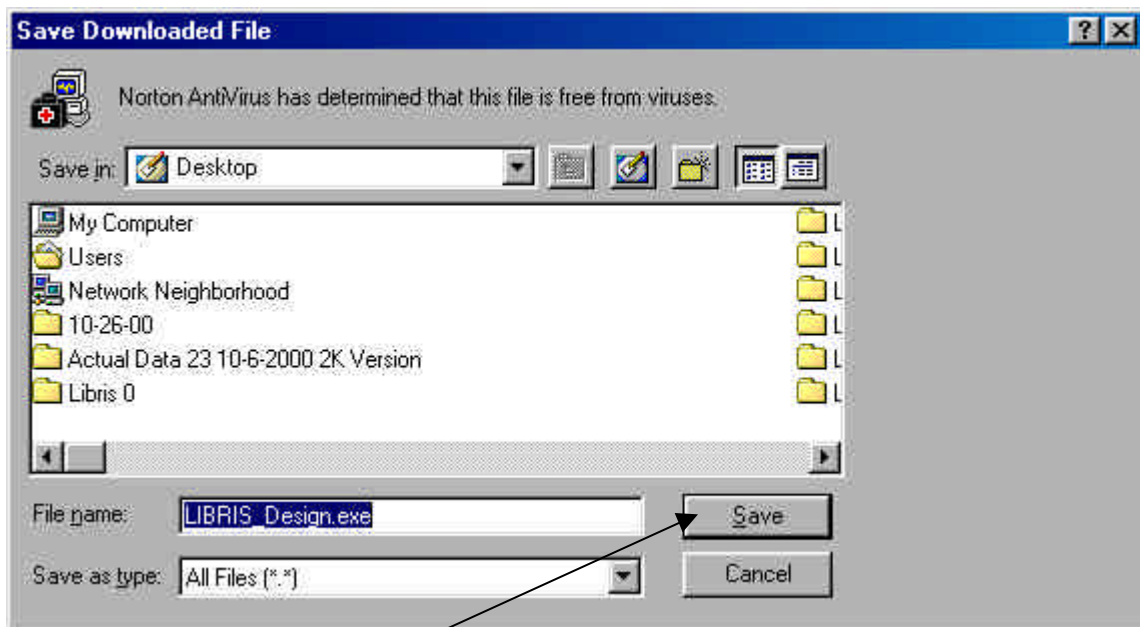
**Users of Libris Design are hereby advised that there is no express or implied warranty in Libris Design, including its software and database. The State Library and the State of California are not responsible for any loss or damage to anyone which may result from the use of Libris Design. Use Libris Design at your own Risk.**

[I agree to the terms above](#) | [I DO NOT agree to the terms above](#)

- Then you will see the “Viewing Location” screen that provides you with the status of the download process;



- Once the download is complete, the following “Save Download File” screen will come up and you may select where you want to save the database by selecting a file folder or leaving it on the desktop (as it is shown below):



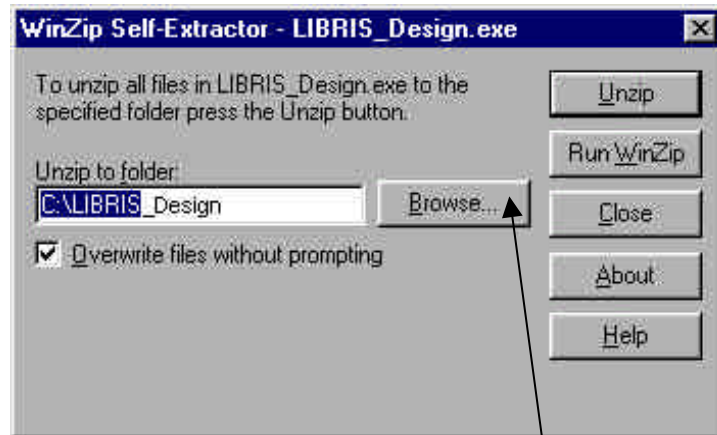
- Click the “Save” button
- When you return to you desktop the icon for the database should look like this:



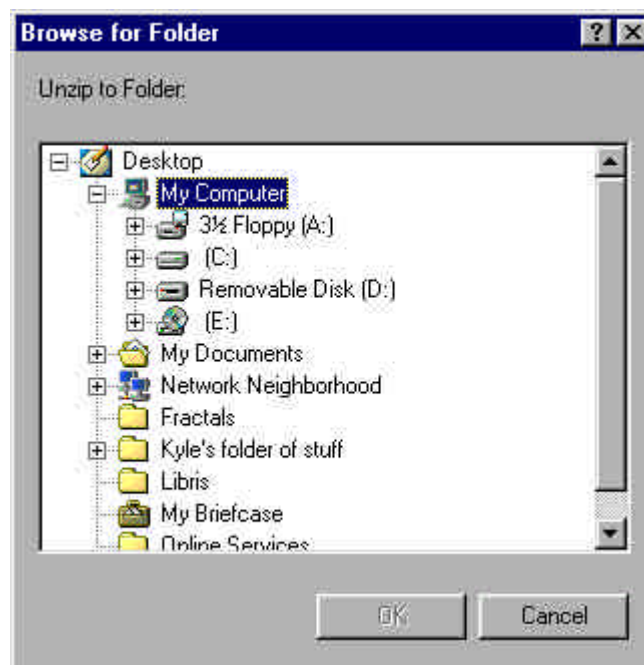
10. Or if you have put it in a file directory, it would look like this if you view it with MS Exploring:

Name	Size	Modified	Type
LIBRIS_Design.exe	5,946KB	10/30/00 10:37 AM	Application

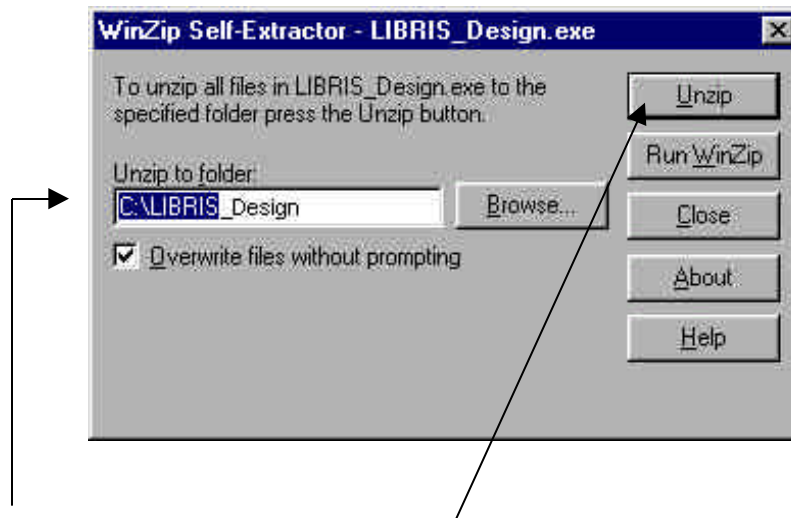
11. If you double click on the icon or file, it will bring up the standard WinZip dialog box that is set to extract the files to C:\LIBRIS\_Design.



12. If you wish to put it in a different directory, you can click on the "Browse" button, and you will get the "Browse for Folder" screen shown below:



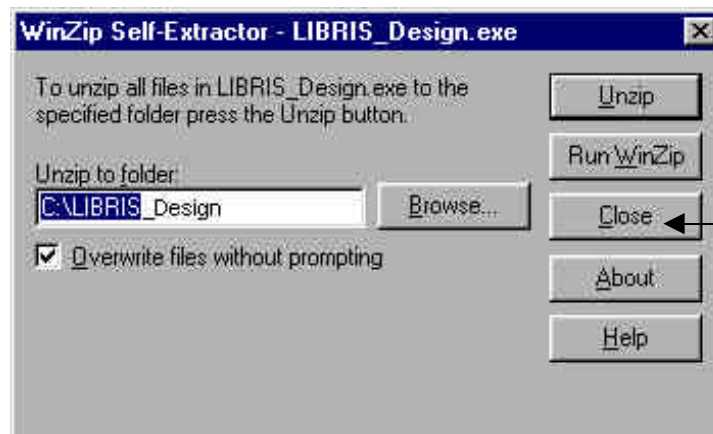
13. Once you have found where you want the application to be placed, you can click on the "OK" button and you will be returned to the standard Win Zip dialog box.



14. Once your directory name is set, click the UNZIP button. It will extract the files to the directory specified, and you will get a message box that confirms the extraction. Click "OK"



15. The dialog box will remain open; check the location to view the extracted files using Windows Explorer. When you have concluded that the extract was successful, click the CLOSE button on the WinZip dialog box to close the program.



16. **NEXT FOLLOW THE "READ ME" FILES FOR ACCESS 97 or ACCESS 2000** depending upon which version of Access you wish to use to run Libris Design.

